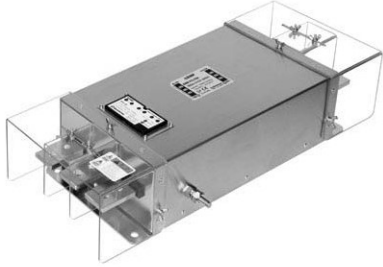


3Ø, 500Vac (800/1,000A) : 삼상 교류 500V 고감쇠형
BBA-5*-MSH Series (High Atten. type)**



■ **Features**

- Busbar type
- High current
- High performance
- Very compact & light weight
- Safety cover for dust

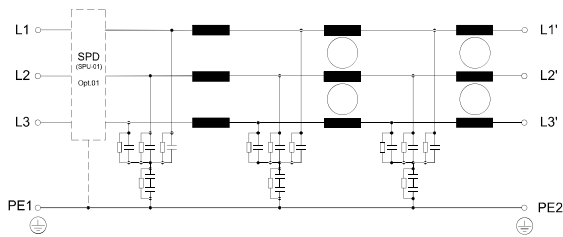
■ **Typical Applications**

- Solar inverter
- ESS, PCS
- AVR, UPS, Inverter, Converter
- Motor drive Equipments
- Various industrial applications

■ **Technical specifications**

Items	BBA-5800-MSH	BBA-5102-MSH
Rated Voltage (V _R)	3Ø, 500Vac (450Vac when use Opt.01)	
Operating frequency	50 / 60Hz	
Rated Currents @40°C (I _R)	800A	1,000A
Withstanding voltage test	Line to Earth : 2,828Vdc for 1min or 3,200Vdc for 2sec. (BHSTD-QUA-Q201)	
Insulation resistance	500Vdc for 1min. 300MΩ Min. (BHSTD-QUA-Q202)	
Leakage current	140mA Max. at rated voltage (BHSTD-QUA-Q203)	
Voltage drop	1.0V Max. (BHSTD-QUA-Q204)	
Temperature range	25/100/21 (-25°C to +100°C), 20~95% RH at Operating & Storage	
Designed according to	IEC/EN 60939 / UL1283 / CSA 22.2 No.8	
Weight [Kg] (Max.)	14.0	14.1

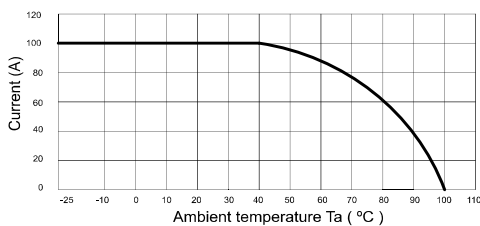
■ **Circuit Diagram**



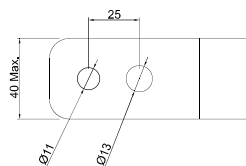
■ **Shape & Dimension (mm)**

See next page

■ **Derating Curve**



■ **Lug ring terminal**



■ **Recommended torque**

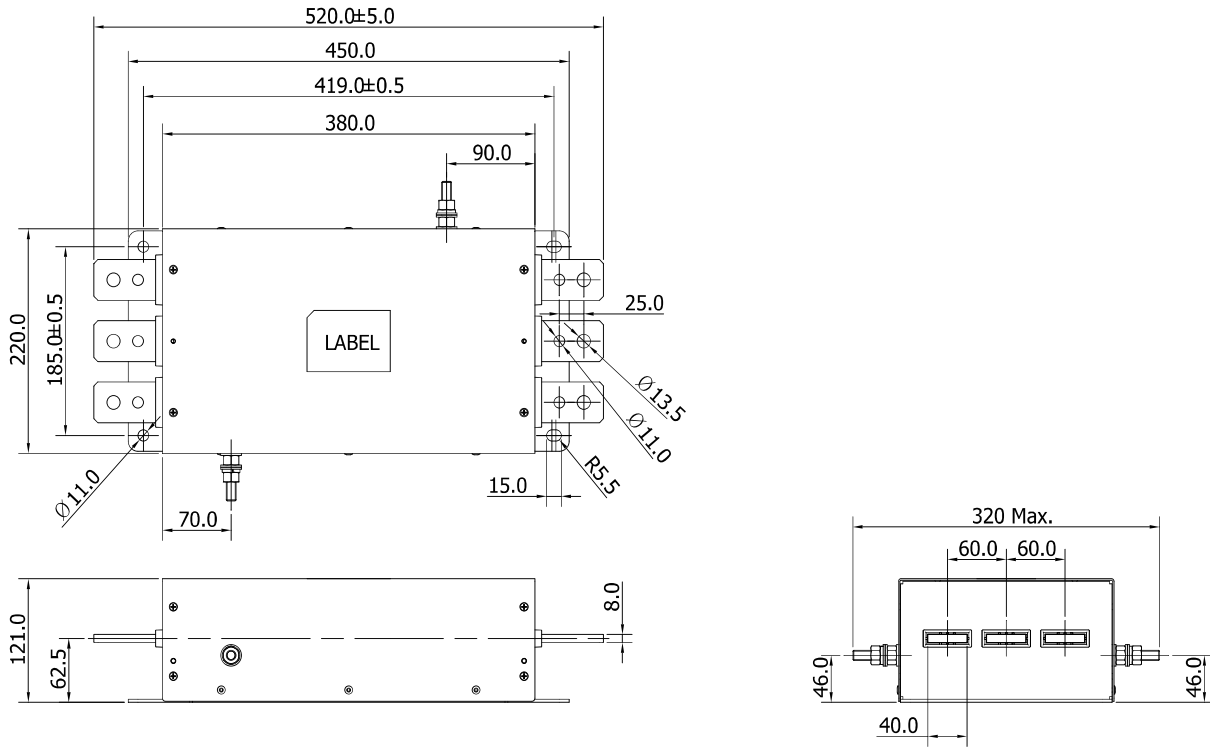
for M10 : 18 ~ 23 N · m
 for M12 : 31 ~ 39 N · m

3Ø, 500Vac (800/1,000A) : 삼상 교류 500V 고감쇠형
BBA-5*-MSH Series (High Atten. type)**

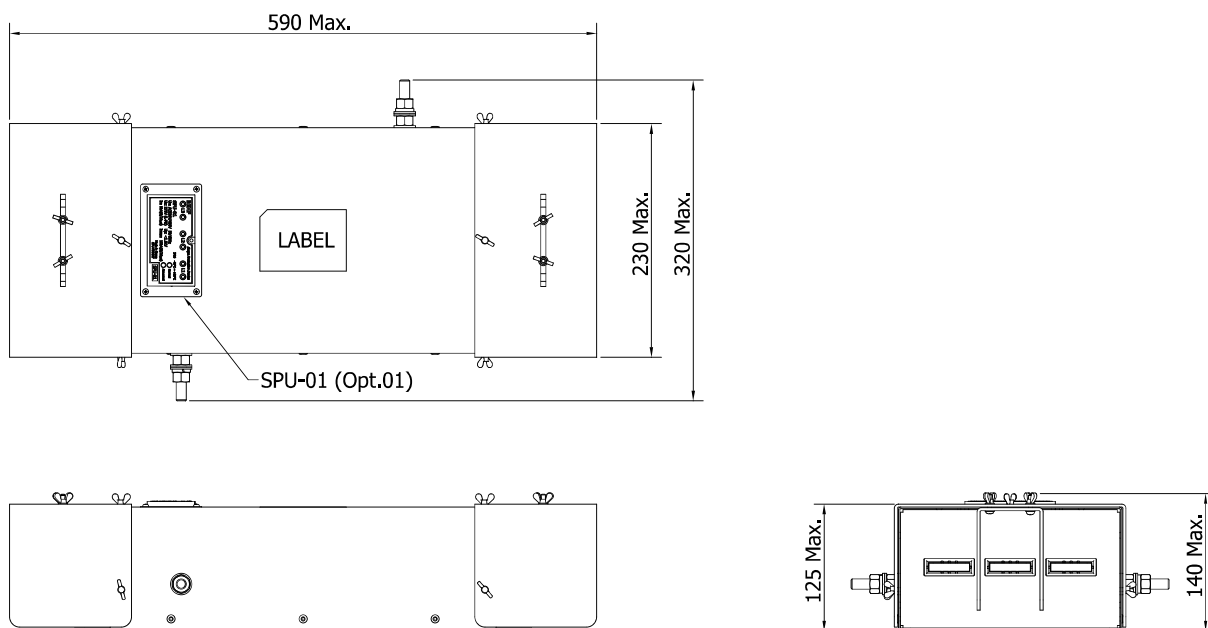
BEMF
 EMI/EMC FILTER

■ Shape & Dimension (mm)

Basic type



Standard type (with terminal protection cover)



TO THE WORLD BUMHAN ● WE MAKE FOR YOU ● TO THE WORLD BUMHAN ● WE MAKE FOR YOU ● TO THE WORLD BUMHAN ● WE MAKE FOR YOU ● TO THE WORLD BUMHAN