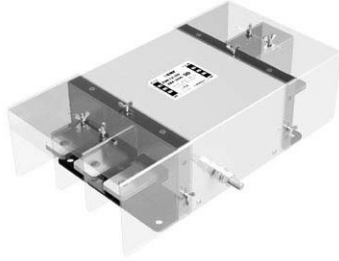


3Ø, 500Vac (800/1,000A) : 삼상 교류 500V 표준형  
**BBA-5\*\*\*-SD Series (Standard type)**



■ **Features**

- Busbar type
- High current
- Standard performance
- Very compact & light weight
- Safety cover for dust
- Standard type

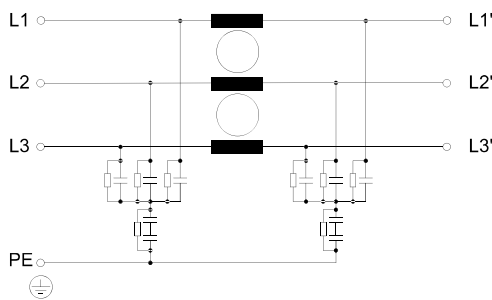
■ **Typical Applications**

- Solar inverter
- ESS, PCS
- AVR, UPS, Inverter, Converter
- Motor drive Equipments
- Various industrial applications

■ **Technical specifications**

Items	BBA-5800-SD	BBA-5102-SD
Rated Voltage (V <sub>R</sub> )	3Ø, 500Vac	
Operating frequency	50 / 60Hz	
Rated Currents @40°C (I <sub>R</sub> )	800A	1,000A
Withstanding voltage test	Line to Earth : 2,828Vdc for 1min or 3,200Vdc for 2sec. ( BHSTD-QUA-Q201 )	
Insulation resistance	500Vdc for 1min. 300MΩ Min. ( BHSTD-QUA-Q202 )	
Leakage current	100mA Max. at rated voltage ( BHSTD-QUA-Q203 )	
Voltage drop	1.0V Max. ( BHSTD-QUA-Q204 )	
Temperature range	25/100/21 (-25°C to +100°C), 20~95% RH at Operating & Storage	
Designed according to	IEC/EN 60939 / UL1283 / CSA 22.2 No.8	
Weight [Kg] (Max.)	10.0	10.0

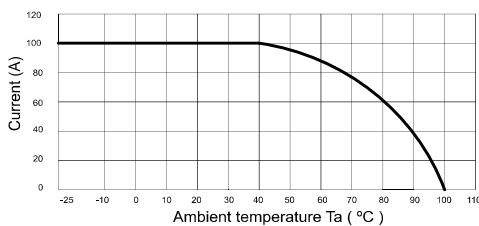
■ **Circuit Diagram**



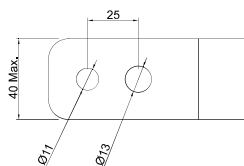
■ **Shape & Dimension (mm)**

See next page

■ **Derating Curve**



■ **Lug ring terminal**



■ **Recommended torque**

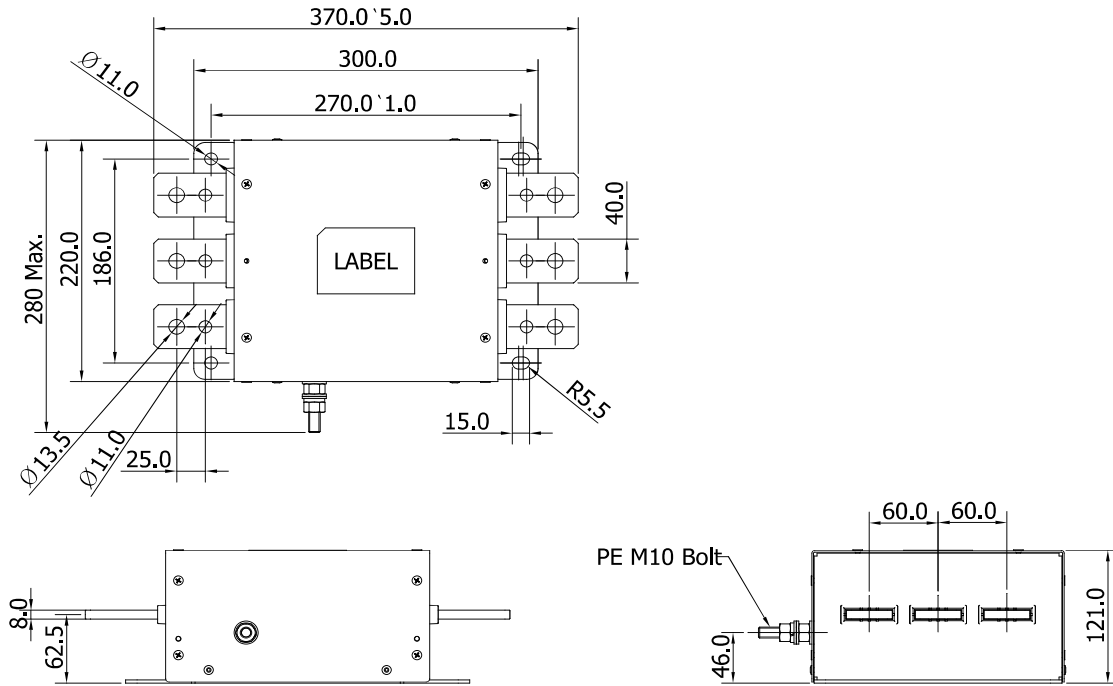
for M10 : 18 ~ 23 N · m  
 for M12 : 31 ~ 39 N · m

3Ø, 500Vac (800/1,000A) : 삼상 교류 500V 표준형  
**BBA-5\*\*\*-SD Series (Standard type)**

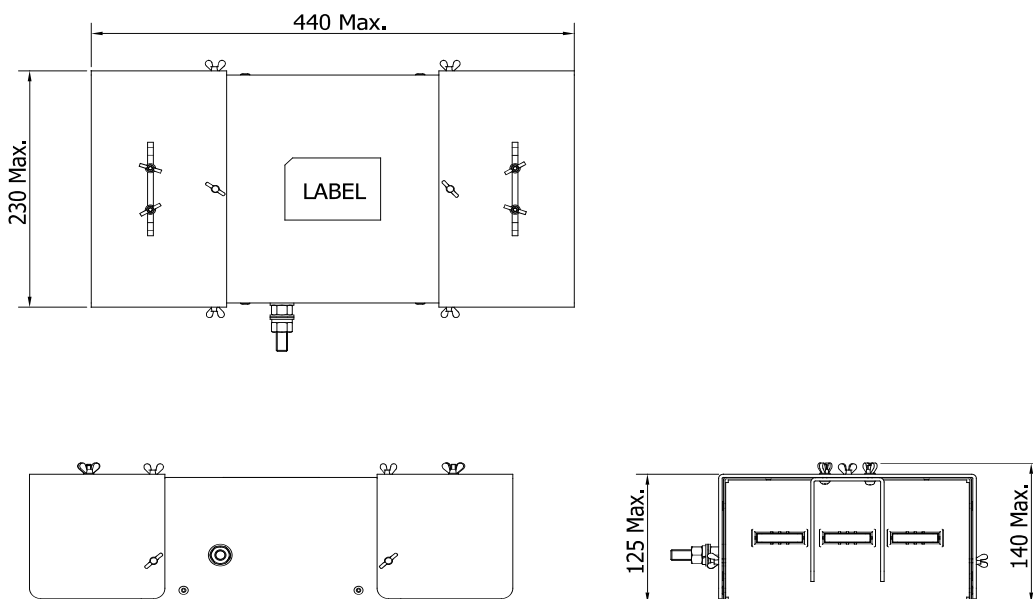
**BEMF**  
 EMI/EMC FILTER

■ Shape & Dimension (mm)

**Basic type**



**Standard type ( with terminal protection cover )**



TO THE WORLD BUMHAN ● WE MAKE FOR YOU ● TO THE WORLD BUMHAN ● WE MAKE FOR YOU ● TO THE WORLD BUMHAN ● WE MAKE FOR YOU ● TO THE WORLD BUMHAN