

DC, 50Vdc (3/6/10/16A) : 직류 50V 표준형
BDC--SD Series (Standard type)**



■ **Features**

- Standard type
- Multi mount structure
- Dual PE system
- Light weight
- Low cost
- DIN Rail available

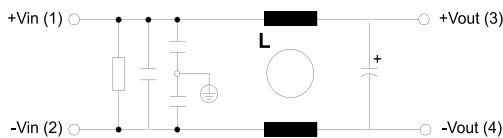
■ **Typical Applications**

- SMPS
- OA Equipments
- Telecommunication equipments
- Control units
- Signal line

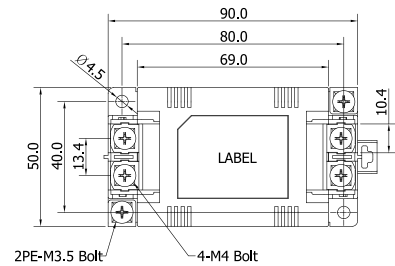
■ **Technical specifications**

Items	BDC-03-SD	BDC-06-SD	BDC-10-SD	BDC-16-SD
Rated Voltage (V _R)	DC, 50Vdc			
Operating frequency	DC			
Rated Currents @40°C (I _R)	3A	6A	10A	16A
Withstanding voltage test	Line to Earth : 2,121Vdc for 1min, or 2,750Vdc for 2sec. (BHSTD-QUA-Q201)			
Insulation resistance	500Vdc for 1min. 300MΩ Min. (BHSTD-QUA-Q202)			
Voltage drop	1.0V Max. (BHSTD-QUA-Q204)			
Temperature range	25/85/21 (-25°C to +85°C), 20~95% RH at Operating & Storage			
Designed according to	IEC/EN 60939 / UL1283 / CSA 22.2 No.8			
Weight [g] (Max.)	160	160	170	170

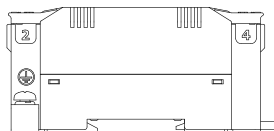
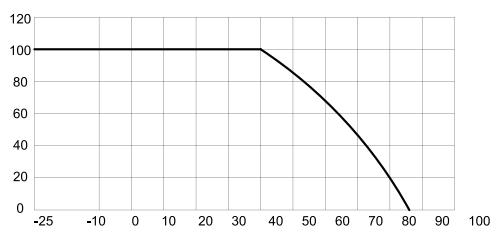
■ **Circuit Diagram**



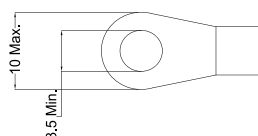
■ **Shape & Dimension (mm)**



■ **Derating Curve**



■ **Lug ring terminal**



■ **Recommended torque**

1.2 ~ 1.4 N · m